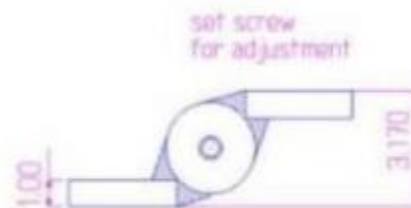
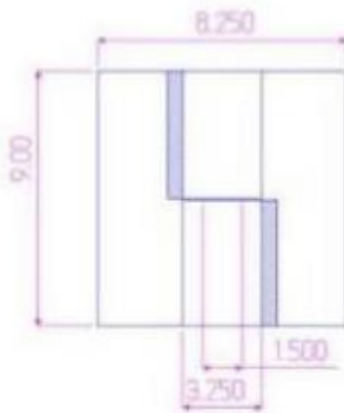
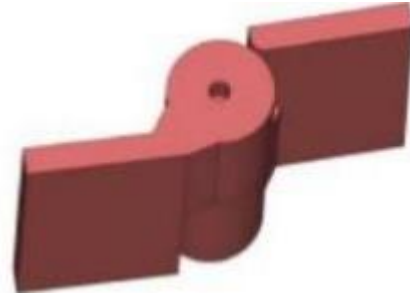


## 9"x 8 1/4" Carbon Steel Half Mortise Hinges

Model Number: 2150RH-ZINC Half Mortise

Price: £ 1250

- Application: Half Mortise
- Finish: Zinc Plated
- Material Type: Carbon Steel
- Maximum Door Weight: 13,000 lbs.
- Maximum Radial Load: 6,820 lbs.
- Mount: Weld-On or Bolt-On
- Approximate Width: 8 1/4"
- Height: 9"
- Weight: 38 lbs.
- Bearing Type: Thrust and Needle Bearings
- Finish: Primer coat, hot dipped or cold galvanized or powder coat
- Service: Heavy Duty



**Kiesler Machine Inc**



**Contact Info :**  
info@kieslermachine.uk

Smoother Than The Rest  
Guaranteed!

Data Provided For Reference Only.

Disclaimer: This drawing is property of Kiesler Machine Inc, Kieslermachine.com. It is owned with the understanding that it will in no way be used in a manner which is harmful to Kiesler Machine Inc.