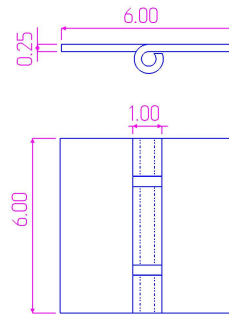
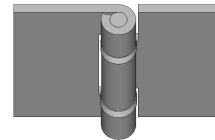


CAGE: 5NKY2 Duns # 148067614

Model Number - B-2566-304
Type - Formed Butt Hinge
Thickness - 1/4"
Type - Non-Handed
Material Type - Stainless Steel
Maximum Door Weight - 400 lbs.
Maximum Radial Load - 300 lbs.
Mount - Weld On
Finish - Plain



THIS DRAWING IS THE PROPERTY OF KIESLER MACHINE, INC./WWW.TOOLBIN.CC. IT IS LOANED WITH THE UNDERSTANDING THAT IT WILL IN NO WAY BE USED IN A MANNER WHICH IS HARMFUL TO KIESLER MACHINE, INC./WWW.TOOLBIN.CC.	HTTP://WWW.KIESLERMACHINE.COM 2023 Kiesler Machine Inc.	PART NUMBER
	HINGES © KIESLERMACHINE.COM 888-565-6610 DATA PROVIDED FOR REFERENCE ONLY	B-2566-304 Heavy Duty Butt Hinge Stainless Steel