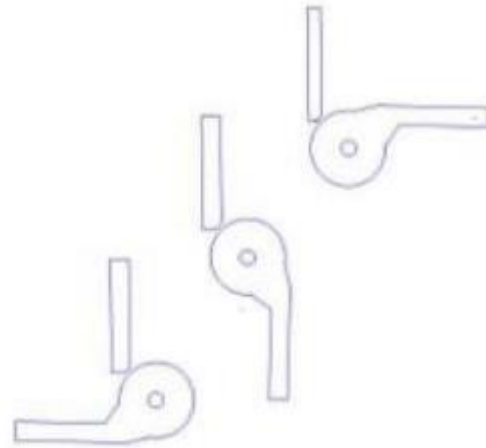
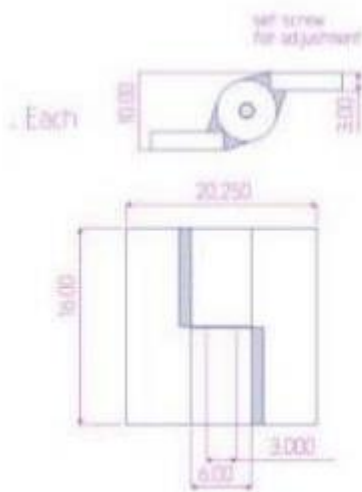
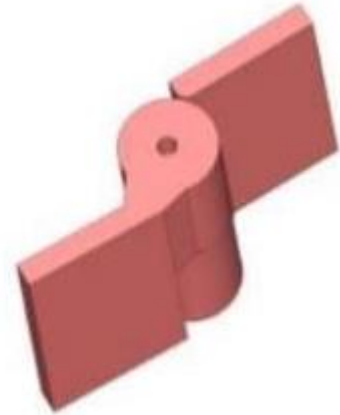


16" x 20 1/4" Carbon Steel Half Mortise Hinge

Model Number: 3000RH -GALV Half Mortise

Price: £ 5870

- Application: Half Mortise
- Finish: Hot Dipped Galvanized
- Material Type: Carbon Steel
- Maximum Door Weight: 40,000 lbs.
- Maximum Radial Load: 25,000 lbs.
- Mount: Weld-On or Bolt-On
- Approximate Width: 20 1/4"
- Height: 16"
- Weight: 480 lbs.
- Bearing Type: Thrust and Needle Bearings.
- Service: Heavy Duty



Kiesler Machine Inc

Contact Info :
info@kieslermachine.uk

Smoother Than The Rest
Guaranteed!

Data Provided For Reference Only.

Disclaimer: This drawing is property of Kiesler Machine Inc, Kieslermachine.com. It is owned with the understanding that it will in no way be used in a manner which is harmful to Kiesler Machine Inc.