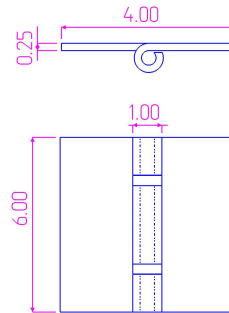
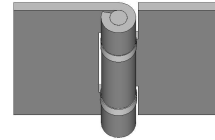


CAGE: 5NKY2 Duns # 148067614

Model Number - B-2546-304  
Type - Formed Butt Hinge  
Thickness - 1/4"  
Type - Non-Handed  
Material Type - Stainless Steel  
Maximum Door Weight - 400 lbs.  
Maximum Radial Load - 300 lbs.  
Mount - Weld On  
Finish - Plain



THIS DRAWING IS THE PROPERTY OF  
KIESLER MACHINE, INC./WWW.TOOLBIN.CC.  
IT IS LOANED WITH THE UNDERSTANDING  
THAT IT WILL IN NO WAY BE USED IN  
A MANNER WHICH IS HARMFUL TO  
KIESLER MACHINE, INC./WWW.TOOLBIN.CC

[HTTP://WWW.KIESLERMACHINE.COM](http://www.kieslermachine.com)  
2023 Kiesler Machine Inc.

HINGES © KIESLERMACHINE.COM  
888-565-6610

DATA PROVIDED FOR REFERENCE ONLY

PART NUMBER **B-2546-304**

Heavy Duty Butt Hinge  
Stainless Steel