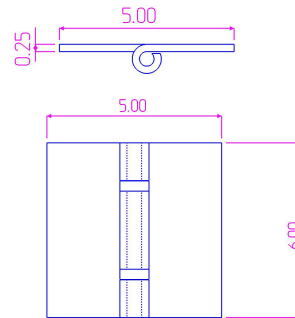
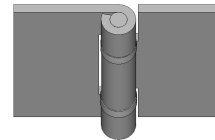


CAGE: 5NKY2 Duns # 148067614

Model Number - B-2556-304
Type - Formed Butt Hinge
Thickness - 1/4"
Type - Non-Handed
Material Type - Stainless Steel
Maximum Door Weight - 400 lbs.
Maximum Radial Load - 300 lbs.
Mount - Weld On
Finish - Plain



THIS DRAWING IS THE PROPERTY OF
KIESLER MACHINE, INC./WWW.TOOLBIN.CC.
IT IS LOANED WITH THE UNDERSTANDING
THAT IT WILL IN NO WAY BE USED IN
A MANNER WHICH IS HARMFUL TO
KIESLER MACHINE, INC./WWW.TOOLBIN.CC.

[HTTP://WWW.KIESLERMACHINE.COM](http://www.kieslermachine.com)
© 2023 Kiesler Machine Inc.

HINGES: © KIESLERMACHINE.COM
888-565-6610

DATA PROVIDED FOR REFERENCE ONLY

PART NUMBER **B-2556-304**

Heavy Duty Butt Hinge
Stainless Steel